

# JET

**10000861**

**SAW STAND**

**PARTS LIST  
ERSATZTEILLISTE  
LISTE DE PIECES**

**Walter Meier (Tool) AG**

Tämperlistrasse 5

CH-8117 Fällanden

Switzerland

Phone +41 44 806 47 48

Fax +41 44 806 47 58

[jetinfo.eu@waltermeier.com](mailto:jetinfo.eu@waltermeier.com)

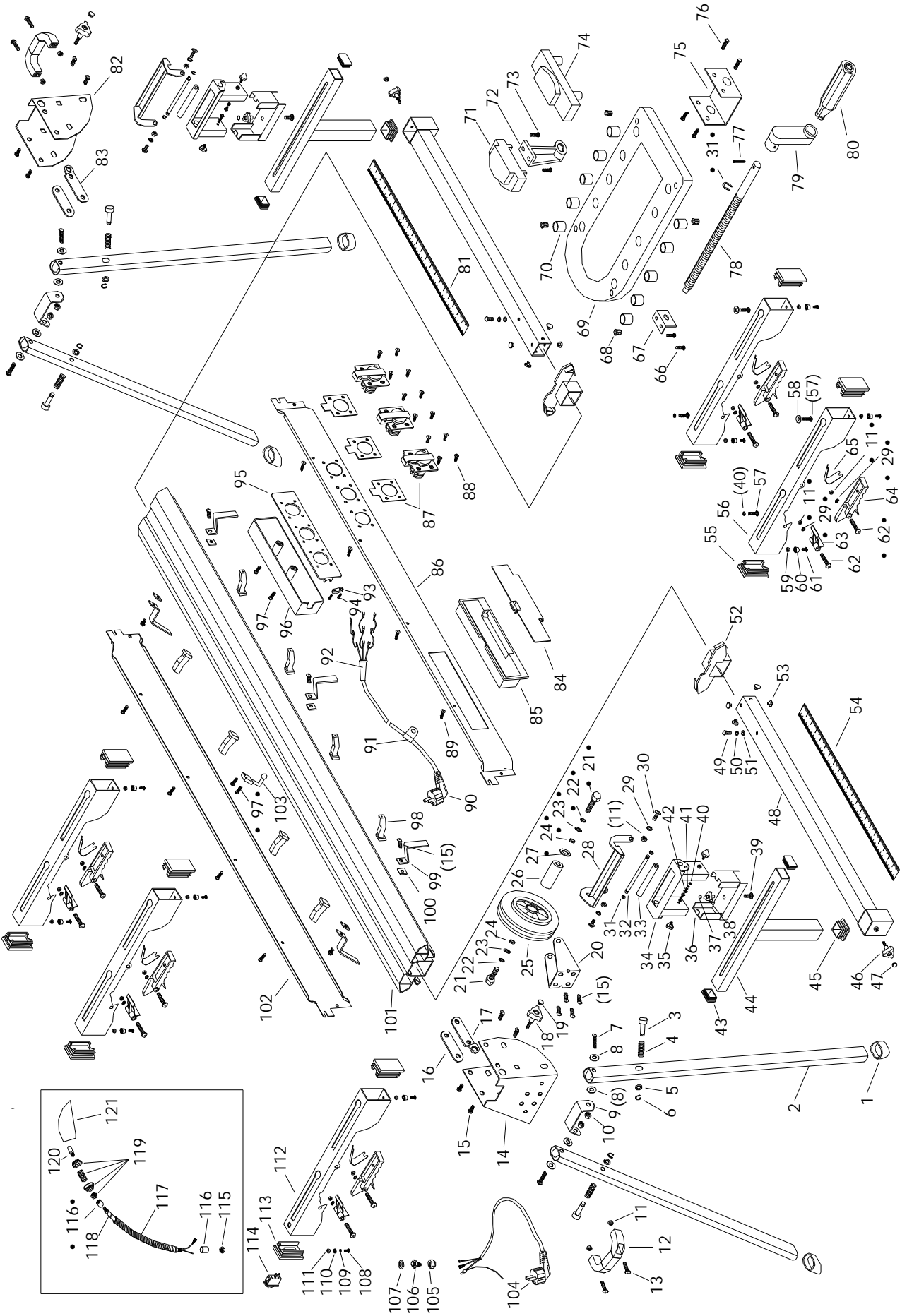
[www.jettools.com](http://www.jettools.com)



P-10000861

2010-08

# Parts Breakdown for the 10000861 Saw Stand



## Parts List for the 1000861 Saw Stand

Index ..	Part No. ....	Description.....	Note .....	Qty
1	1000861-001	Rubber foot.....		4
2	1000861-002	Support leg .....		4
3	1000861-003	Pin.....		4
4	1000861-004	Spring.....		4
5	1000861-005	8mm flat washer.....		4
6	1000861-006	8mm snap ring for shaft.....		4
7	1000861-007	M8x50 bolt.....		4
8	1000861-008	8mm shim.....		8
9	1000861-009	Block.....		2
10	1000861-010	M8 check nut .....		4
11	1000861-011	M6 check nut .....		18
12	1000861-012	Handle .....		2
13	1000861-013	M6x16 bolt .....		4
14	1000861-014	Support.....		1
15	1000861-015	M8x10 bolt.....		18
16	1000861-016	Long washer (2 holes).....		2
17	1000861-017	Long washer (3 holes).....		1
18	1000861-018	M10 Bolt .....		2
19	1000861-019	Cap.....		2
20	1000861-020	Wheel Support .....		1
21	1000861-021	M12x25 hex bolt.....		2
22	1000861-022	12mm spring washer.....		2
23	1000861-023	12mm flat washer.....		2
24	1000861-024	12x18x3.5mm washer .....		2
25	1000861-025	wheel.....		1
26	1000861-026	shaft (short).....		1
27	1000861-027	shaft cover .....		1
28	1000861-028	movable frame .....		2
29	1000861-029	6mm flat washer.....		8
30	1000861-030	M6x12 bolt .....		4
31	1000861-031	10mm snap ring .....		5
32	1000861-032	shaft (long).....		2
33	1000861-033	plastic pipe.....		2
34	1000861-034	movable frame seat (1) .....		2
35	1000861-035	M6 bolt.....		4
36	1000861-036	movable frame seat (2) .....		2
37	1000861-037	M8 nut cap.....		2
38	1000861-038	M8 nut .....		2
39	1000861-039	M8x14 bolt .....		2
40	1000861-040	6mm flat washer (Black).....		9
41	1000861-041	6mm spring washer (Black).....		4
42	1000861-042	M6x16 Cross recessed pan head bolt.....		4
43	1000861-043	long cap.....		4
44	1000861-044	T - square pipe.....		2
45	1000861-045	square cap.....		2
46	1000861-046	M8 bolt.....		2
47	1000861-047	M8 bolt cap .....		2
48	1000861-048	stretch pipe .....		2
49	1000861-049	M5x10 Cross recessed pan head bolt.....		2
50	1000861-050	5mm flat washer.....		2
51	1000861-051	5mm spring washer.....		2
52	1000861-052	Cap.....		2
53	1000861-053	Stopper.....		8
54	1000861-054	Ruler (left).....		1
55	1000861-055	Cap.....		9
56	1000861-056	Support Frame.....		4
57	1000861-057	M6x20 Cross recessed pan head bolt.....		10
58	1000861-058	8x23.5x2mm flat washer (Black).....		5
59	1000861-059	M4 lock nut .....		8
60	1000861-060	frame foot .....	2	8

61	10000861-061	M4x10 Cross recessed pan head bolt	8
62	10000861-062	M6x45 bolt	10
63	10000861-063	guide frame	5
64	10000861-064	guide spaner	5
65	10000861-065	spring plate	5
66	10000861-066	ST3.9x16 taping screw	2
67	10000861-067	fixed block	1
68	10000861-068	Bolt	4
69	10000861-069	Base Plate	1
70	10000861-070	Sleeve (2) • 23.5x18	10
71	10000861-071	clamping block (2)	1
72	10000861-072	fixed block	1
73	10000861-073	M5x20 Cross recessed pan head bolt	2
74	10000861-074	clamping block (1)	1
75	10000861-075	Clamp support	1
76	10000861-076	ST3.9x20 taping screw	4
77	10000861-077	spring pin • 3x25	1
78	10000861-078	screw bar	1
79	10000861-079	crank	1
80	10000861-080	Handle	1
81	10000861-081	ruler (right)	1
82	10000861-082	support	1
83	10000861-083	Long washer (3 holes)	1
84	10000861-084	toolbox cover	1
85	10000861-085	toolbox	1
86	10000861-086	side plate (1)	1
87	10000861-087	socket	3
88	10000861-088	ST3.9x10 taping screw	12
89	10000861-089	ST3.9x12 taping screw	8
90	10000861-090	wire cable (1)	1
91	10000861-091	cable clamp	1
92	10000861-092	protector	1
93	10000861-093	plate	1
94	10000861-094	ST3.9x12 taping screw	2
95	10000861-095	cover	1
96	10000861-096	socket box	1
97	10000861-097	ST3.9x10 taping screw	4
98	10000861-098	bolt seat	8
99	10000861-099	located support	6
100	10000861-100	square washer	6
101	10000861-101	shape material	1
102	10000861-102	side plate (2)	1
103	10000861-103	Hook	1
104	10000861-104	wire cable (2)	1
105	10000861-105	Nut	1
106	10000861-106	protector (2)	1
107	10000861-107	protector (3)	1
108	10000861-108	M4x10 bolt	1
109	10000861-109	• 4 spring washer	1
110	10000861-100	• 4 toothed washer	1
111	10000861-111	M4 nut	1
112	10000861-112	Support frame (2)	1
113	10000861-113	Cap	1
114	10000861-114	Switch	1
115	10000861-115	M10x1.5 Nut	1
116	10000861-116	Pipe	2
117	10000861-117	Hose	1
118	10000861-118	Hose	1
119	10000861-119	Lamp Socket	1
120	10000861-120	Bulb 230V, E12, 15W	1
121	10000861-121	Lamp Shade	1